



2020 Spelling Bee Competition Rules and Guidelines

RULES

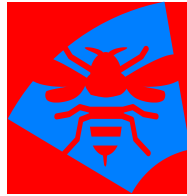
Any Northern GA Second youth between ages 6 to 18 who are in grades 1 thru 12.

Guideline and Rules

<i>Level I</i>	~~~~~	<i>Grades 1 – 2</i>
<i>Level II</i>	~~~~~	<i>Grades 3 – 4</i>
<i>Level III</i>	~~~~~	<i>Grades 5 – 6</i>
<i>Level IV</i>	~~~~~	<i>Grades 7 – 8</i>
<i>Level V</i>	~~~~~	<i>Grades 9 – 12</i>

Word List will be available from your Local Church or District Representative or

1. Download from Internet: www.ng2cogic.com
2. Contact Missionary Tressy Jones, State Spelling Bee Coordinator at jones.tressy@yahoo.com with any questions or concerns.



Study Requirement:

Study your grade level list, put the spelling in a sentence, and look up definitions. Another tool for studying is a spelling bee app. Some can assist contestant with words and pronunciation. Find the one that best helps you child.

*****All contestants are required to look up their grade level definitions and know them. This will assist you if you are having difficulty with pronunciation and understanding.**



Local Church Guidelines

Each church will conduct a spelling bee with their children following the Competition Rules and judges duties listed below.

It will be important that each person know the Spelling words from their grade level. Tie – breakers will be taken from the grade level above their own. For example, if the student is in the 1 – 2 grade level will have tie –breaker words from the 3 – 4 grade level or higher.

Some practice with tie-breaker will only help the contestant.

Each grade level should be represented in the district competition if possible.

We are asking you to send your strongest speller in each grade to the District competition. We know and understand that some churches may not have children in each grade group.

District Guidelines

On the district level, we need a panel of church representatives to act as the judges (Timekeeper, Round keeper, and Pronouncer). They will conduct the spelling bee for the best speller in each grade group.

The individuals that win the District competition per grade group will go on to represent their District in the Jurisdictional competition.

We are asking you to send your strongest speller in each grade group to the Jurisdictional competition.

The same rules will apply to each level of the competition. We want consistency so that those competing will be comfortable when they arrive at the Jurisdictional level.

Competition Rules

1. For those contestants participating in the spelling bee round, the Pronouncer shall pronounce each word clearly. The contestant will then have to say the word, spell the word and say the word again.

2. *If the contestant is unsure of the word, he/she may ask the Spell master to put the word in a simple sentence and/or give a definition.* (Note some words have more than one spelling or definition. If the word is spelled right it will be accepted)
3. Having started to spell a word, a contestant shall be given **no opportunity** to change the letters once pronounced. A speller, having started to spell a word may retrace, providing the letters and their sequence are not changed in the retracing.
4. Upon missing the spelling of a word, the contestant will be dropped from the contest.
5. When the contestants are reduced to two, the elimination procedure changes.
6. When the first person misspells a word the second person must spell that word plus the next word to win.
7. However, if the second person misspells the next word, then the first person may spell the misspelled word correctly, and then same person must spell next word correctly in order to win the competition. **(In other words, the winner must correctly spell two words in a row to win).**
8. Any question during the contest must be referred to the judges immediately. No protest can be considered after the next round has started.



Judges

1. The three judges are in complete control of the Bee.
2. 1st Judge has the final say during the Bee. (Timekeeper)
2nd Judge shall follow the word list. (Recorder)
3rd Judge shall pronounce the words to the contestant (Pronouncer)

Either judge may assist the pronouncer with the reference dictionary such as Webster or Dictionary.com app. This app can also assist with pronunciation of the word.

Judges Duties

Timekeeper will:

Each speller shall have 30 seconds to begin spelling. If the speller does not begin spelling at the end of their first 30-second period, the judge will say—**TIME, PLEASE BEGIN.**

The speller will then have 30-second from the time the judge says – **TIME, PLEASE BEGIN** until he/she must finish spelling the word.

If the word is not completely and correctly spelled within the second 30-second period, the Judge will say **“TIME! I’m sorry, your time is up.”**

The speller will then report to the round keeper for elimination.

Round keeper will:

- 1.) ***Keep a running record of the rounds.***
- 2.) ***Watch the order of contestants.***
- 3.) ***Give careful attention to who begins each round {the new round begins when the last contestant correctly spells their word}***
- 4.) ***Insure that words are not used again once it has been spelled correctly.***
- 5.) ***The eliminated contestants reports to you or your helper. Upon the completion of the elimination forms—send the eliminated contestant to the holding area.***
- 6.) ***Staple Round keeper form to the Legal Pad pages used for keeping track of rounds and all elimination forms from contestants.***

Pronouncer will:

- 1.) Will choose the order in which to call the Words
- 2.) They may pronounce the word several times
- 3.) They may use the word in a sentence to assist the contestant with understanding the word being pronounced.
- 4.) The Pronouncer may also give the definition of the word or origin, such as Latin, Spanish, German, English, etc. -- if requested.